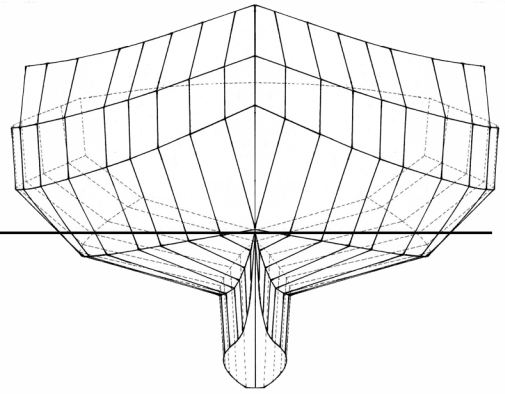


Big Foot Marine

CONSULTATION | DESIGN | CONSTRUCTION



Eco-Tour Vessel for the Pacific Northwest

The growing success of various environmentally themed businesses around the world has prompted me to design a small vessel intended to open the sheltered waters and coastal wilderness areas of the Pacific Northwest to the discerning public.

There are a number of unique problems that must be solved for a small vessel to meet the needs of a “bare boat” charter business in remote areas. Some of the more obvious are:

1. The vessel must be easy and intuitive to handle.
2. She must be safe and seaworthy thru out a broad operating range.
3. This vessel must be comfortable for two to four adults for a week or two of wilderness exploration.
4. This vessel must possess a high degree of reliability and simple robust systems packaged in comfortable pleasing surroundings.
5. She must be capable of coping with significant sea conditions. Even the sheltered waters of the Pacific Northwest present stretches of open water, vicious tide rips and unpredictable winds.
6. A shallow draft with upright grounding abilities are also necessary to minimize the stress of the inevitable grounding in large unfamiliar tides and shallow water explorations.
7. Displacement hull speed to minimize breakdowns and injury to the public and the vessel. This requirement has the added advantage of supplying the vessel with a large cargo capacity, good fuel efficiency and quiet operation.
8. A large open deck is desirable for comfortable sitting, eating, fishing and sightseeing.
9. Safe egress to small skiffs, kayaks, swimming and diving is another requirement.
10. From owner’s point of view, easy clean up and fast return to service is important.
11. The vessel should be able to function as a working vessel thru out the remainder of the year in a variety of services such as subsistence fishing, crabbing or even cargo transportation.
12. Finally, spring cleaning and return to charter service must be accomplished with minimal hassle and support facilities.

Most of the above requirements are not being addressed by the existing boating industry. I believe that I am the only designer that has attempted to incorporate these modifications into an affordable 29 foot vessel. The 29 foot prototype eco-tour vessel that I have named the “Raven” is currently about 50% complete and is available for inspection to interested parties.

In addition I own a 25 foot proof of concept vessel, “Shadowfax,” that is available for sea trials and handling demonstrations. For more information on the vessels mentioned above, as well as, my background and some of my other projects, please check my web site at www.bigfootmarine.com.